

**Product Specifications**

**Refrigerated Self-Service Case 24"D**



MODEL SHOWN: B42-QS

- B32-QS
- B42-QS
- B62-QS
- B82-QS

**Lengths include end panels**  
 34-1/2"L x 24-1/4"D x 82-3/8"H  
 45-1/2"L x 24-1/4"D x 82-3/8"H  
 66-3/8"L x 24-1/4"D x 82-3/8"H  
 88-3/8"L x 24-1/4"D x 82-3/8"H

**STANDARD FEATURES**

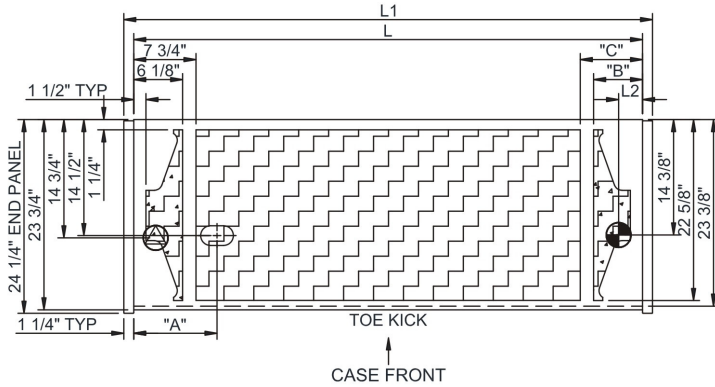
- Breeze™ w/EnergyWise s/c refrigeration
- Compressor air lower front intake and upper front discharge.  
Front panel cannot be blocked
- Condensate pan (self-contained refrig. only)
- Flat upper front panel & header
- Integrated average product temperature of 40°F or less
- LED 4000K top light(s)
- One year parts & labor; 5 year compressor warranty
- Removable deck pans provide complete access to evaporator coil & refrigeration connections
- Shelving removable and adjustable on 1" centers
- Solid back panel, black

Features	Standard	Options
<b>EXTERIOR COLOR</b>	<input type="checkbox"/> Laminated (non-premium) Confirm pattern/grain direction	<input type="checkbox"/> Laminated (premium) Confirm pattern/grain direction
<b>INTERIOR COLOR</b>	<input type="checkbox"/> Black	
<b>LWR PERFORATED FRNT PANEL</b>	<input type="checkbox"/> Painted - Black	
<b>BASE</b>	<input type="checkbox"/> Casters	
<b>END PANELS</b>	<input type="checkbox"/> Full end panel w/mirror interior (metal edge matches interior color)	
<b>SHELVING</b>	<input type="checkbox"/> Metal shelves, non-lighted	<input type="checkbox"/> Metal shelves, lighted (LED 4000K)
<b>REFRIGERATION</b>	<input type="checkbox"/> Breeze™ w/EnergyWise s/c refrigeration	
<b>MISCELLANEOUS</b>		<input type="checkbox"/> Second year parts & labor warranty (excludes compressor)

## Product Specifications

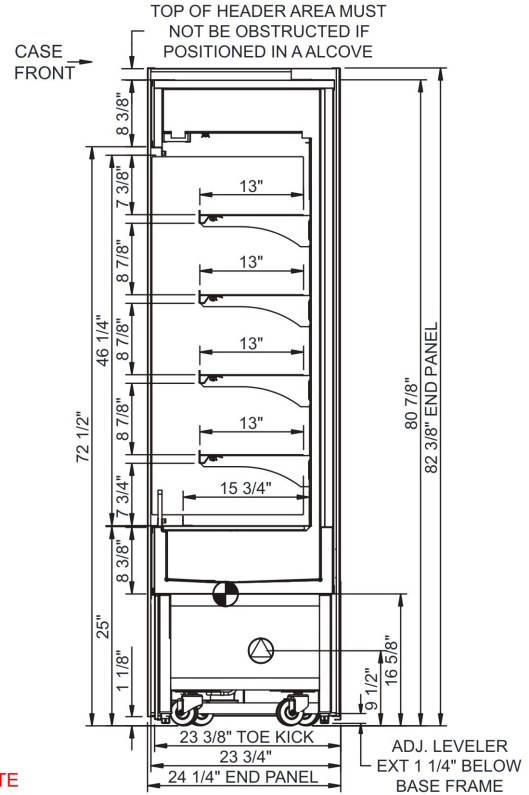
<b>Intended Environment:</b> Type I - Designed to operate in ambient conditions of 75°F with 55% relative humidity unless noted otherwise in system information below.		<b>Warmest Avg Prod Temp ° F</b>
<b>Zone</b>	<b>Intended Product To Be Displayed</b>	
1	Packaged refrigerated products	40

PLAN VIEW



	"A"	"B"	"C"
B32	7"	N/A	5 5/8"
B42	7"	6 1/8"	7 3/4"
B62	10 3/8"	6 1/8"	7 3/4"
B82	19 3/8"	17 1/2"	19 1/4"

SIDE VIEW



NOTE: ALL DIMENSIONS APPROXIMATE

- ELECTRICAL JUNCTION BOX (SUPPLIED WITH 6" LEADS OR POWER CORD).
- LOCATION OF DRAIN TUBE FOR REMOTE REF. ONLY (SUPPLIED WITH 3/4" OR 1 1/2" PVC TUBE).

- REFRIGERATION LINE CONNECTION.
- REMOTE FLOOR SINK & UTILITIES ACCESS AREA.

- SELF-CONTAINED CASE SERVICE ACCESS AREA.
- DRY CASE SERVICE ACCESS AREA.

Model Technical Specifications

Model	L"	L1"	L2"	System	Circuit Volts	Phs	Freq	Amps ***	Watts	Wires	NEMA Plug	SST	Conv. Rack BTUH	Para. Rack BTUH	Est Wt
B32-QS	N/A	34.50	3.13	Self-Contained	Circuit #1 110-120	1	60	14.08	1,216	2+G	5-20P or L5-20P	N/A	N/A	N/A	800
B42-QS	N/A	45.50	3.13	Self-Contained	Circuit #1 110-120	1	60	16.00	1,372	2+G	5-20P or L5-20P	N/A	N/A	N/A	900
B62-QS	N/A	66.38	3.13	Self-Contained	Circuit #1 208-240	1	60	11.10	2,066	2+G	6-20P	N/A	N/A	N/A	1,100
B82-QS	N/A	88.38	3.13	Self-Contained	Circuit #1 120/230V	1	60	15.97	3,392	3+G	14-20P or L14-20P	N/A	N/A	N/A	1,200

\*\*\* Does not include electric defrost on freezer models.

Important Notes:

- 1) ELECTRICAL NOTE: If GFCI is required, a GFCI breaker MUST be used in lieu of a GFCI receptacle
- 2) Performance issues (product temperatures, water on floor, etc.) caused by adverse conditions are not covered by warranty.
- 3) Keep unit at least 15' from exterior doors, overhead HVAC vents, or any air curtain disruption.
- 4) End panels must be tightly joined or kept at least 6" away from any structure to prevent condensation.
- 5) Do not expose unit to direct sunlight or any heat source (ovens, fryers, etc.).
- 7) Tile floors, low ceilings, or small rooms will increase noise level.

**⚠ WARNING:** This product can expose you to chemicals, including Urethane (Ethyl Carbamate), which are known to the State of California to cause cancer and birth defects or other reproductive harm. For more information go to [www.P65Warnings.ca.gov](http://www.P65Warnings.ca.gov).

Regulatory Approvals:	
All Models	Accordance with AHRI Std 1200 ETL Listed to UL 471 ETL Listed to CAN/CSA 22.2 No. 120 UL Sanitation to NSF Std 7



In Accordance with  
**AHRI Std 1200**

**DOE 2017**  
Energy Efficiency  
Compliant