

# KOLD-DRAFT®

ice machines • bins • crushers • dispensers

## HD200 / HDX200 SERIES ICE DISPENSERS

Kold-Draft Ice Dispensers deliver a high-capacity storage and easy to use ice dispenser solution. The HD200 & HDX200 will fit any 30" modular ice maker. These dispensers feature easy to use push button operation and a lift wheel agitation/dispensing system to prevent ice clumping.

### FEATURES

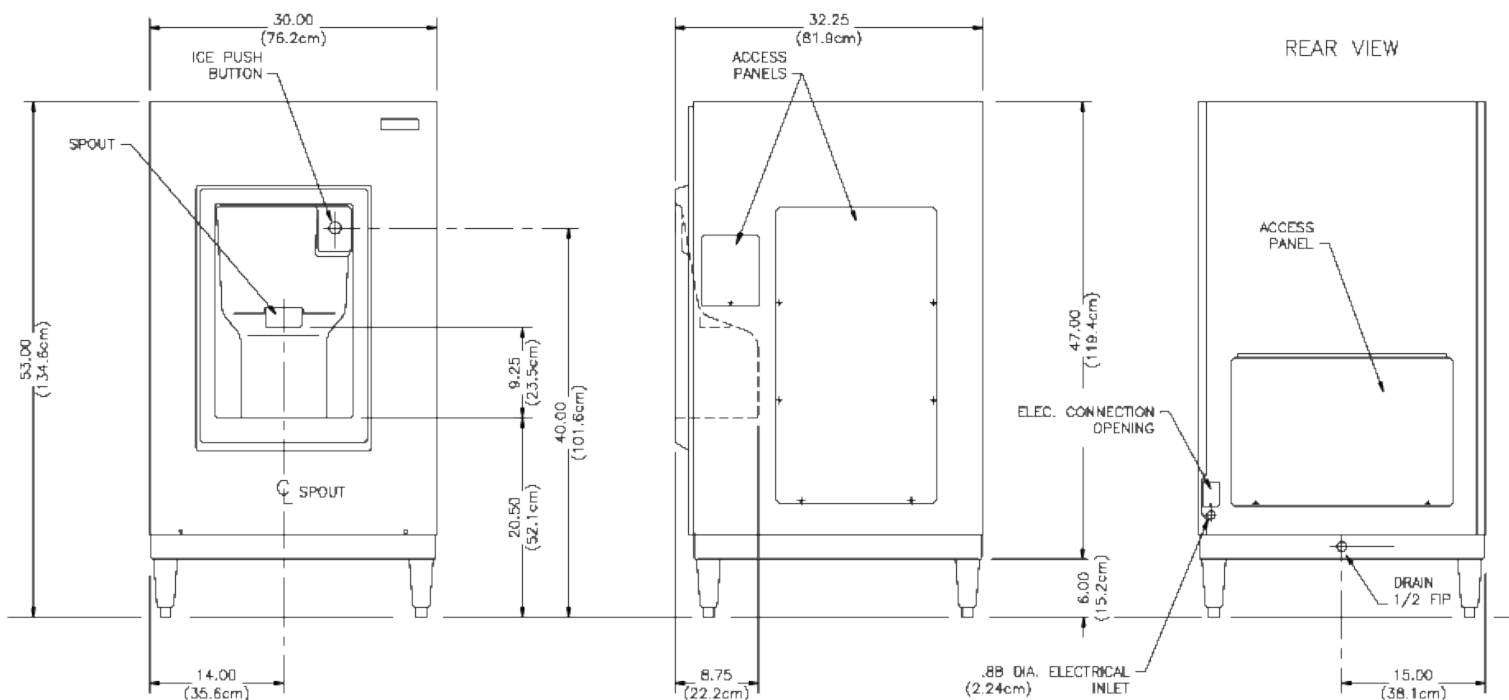
- 190 lbs. (86 kg) Ice Storage Capacity
- 30" (762 mm) Wide
- Push Button Ice Dispensing
- Regular Timed Agitation Keeps Ice Cubes Separated in Storage Bin
- 304 Series Stainless Steel Exterior
- Large Sink Accommodates Most Hotel Ice Buckets
- Urethane Foam Insulated Cabinet
- Large Drain Pan to Collect Overflow
- Will Dispense Various Cube Sizes
- Available with 90° corners (HD201, HD204, HD207) or rounded corners (HDX201, HDX204, HDX207)
- 115V/60/1
- 208-230/60/1 and 220/50/1 models also available



SHOWN WITH ICE MAKER (NOT INCLUDED)

IT'S NICE TO BE NOTICED™





Model	Electric	MCA	MOP	Storage Capacity	Corner Style	Operating Temperature Range	Operation	Drain	Dimensions (Including Legs) In (mm)	Shipping Weight
HD201	115/60/1	2.1A	15A	190 lb (86.2 kg)	90°	45° F - 90° F (7°C - 32° C)	Push Button	1/2" IPS	30" x 32.3" x 53" (762 x 820 x 1346)	230 lb 104 kg
HD204	208-230/60/1	1.2A	15A	190 lb (86.2 kg)	90°	45° F - 90° F (7°C - 32° C)	Push Button	1/2" IPS	30" x 32.3" x 53" (762 x 820 x 1346)	230 lb 104 kg
HD207	220/50/1	1.2A	15A	190 lb (86.2 kg)	90°	45° F - 90° F (7°C - 32° C)	Push Button	1/2" IPS	30" x 32.3" x 53" (762 x 820 x 1346)	230 lb 104 kg
HDX201	115/60/1	2.1A	15A	190 lb (86.2 kg)	Rounded	45° F - 90° F (7°C - 32° C)	Push Button	1/2" IPS	30" x 32.3" x 53" (762 x 820 x 1346)	230 lb 104 kg
HDX204	208-230/60/1	1.2A	15A	190 lb (86.2 kg)	Rounded	45° F - 90° F (7°C - 32° C)	Push Button	1/2" IPS	30" x 32.3" x 53" (762 x 820 x 1346)	230 lb 104 kg
HDX207	220/50/1	1.2A	15A	190 lb (86.2 kg)	Rounded	45° F - 90° F (7°C - 32° C)	Push Button	1/2" IPS	30" x 32.3" x 53" (762 x 820 x 1346)	230 lb 104 kg

Energy-performance data are derived from testing in accordance with AHRI 810 and CAN/CSA C742 Standards for Performance Rating of Automatic Commercial Ice Makers and verified by Intertek/ETL.

All models are certified in compliance with ANSI/UL 563 and CAN/CSA C22.2 No. 120 Standards for Safety by Intertek/ETL.

Please observe minimum circuit ampacity and maximum fuse size listed above. Fuse or HACR-type circuit breaker branch circuit protection within the range of minimum ampacity and maximum fuse size shall be provided or warranty may be voided. We reserve the right to make product improvements at any time. Specifications and design are subject to change without notice.