



Project: _____

Location: _____

Item #: _____ Quantity: _____

Model #: _____

MODEL: ICT-VIP1490B1/3SOLIDLID **COUNTER TOP: Refrigerated ingredient displays – Solid lid**

Important: Do only introduce refrigerated products! For daily cleaning, remove products and disconnect unit.



General Strengths

- ✓ **Sanitation.** The interior cabinet is built with rounded corners (extensive radius for easy cleaning). Quick ability to take off shelves and slides for interior cleaning. Each cabinet has a drain at the bottom of the unit. When cleaning the unit make sure the drain hose is routed to a floor drain.
- ✓ **Control systems.** Higher precision in managing temperature settings. Greater ability to adjust temperature ranges as per the end user's requirement.
- ✓ **100% Tested.** All condenser units are tested 100%, in helium chambers to refrigerant leak detections.
- ✓ **Certified.** Audited and Certified by **INTERTEK** for compliance with UL 471 and NSF 7. AENOR audited and certified by internationally recognized firm. ISO 9001:2008 (Quality); ISO 14001:2004 (Environmental); OSHAS 18001:2007 (Prevention and Worker Safety)

MODEL	Dimensions (inches) (mm)			Nº Lid	Nº Pans	Ref.	Ref. Weight (Lbs.) (gr.)	Temp. Range (°F) (°C)	Capacity (Cu. Ft.) (L)	Cond. Unit. H.P.	Case Amps 115 V.	Crated Weight (Lbs.) (Kg.)
	W	D	H									
ICT-VIP1490 B1/3solidlid	58-3/4 1493	16-1/4 413	10-1/4 260	1	5	R134a	0.48 220	39°F/41°F 4°C/6°C	1.55 44	1/6	1.82	132 60

ETL LISTED TO UL471 STANDARD AND SANITATION CLASSIFIED TO NSF7 – WE RESERVE THE RIGHT TO CHANGE SPECIFICATIONS WITHOUT PRIOR NOTICE



Infrico USA Corp.
7042 N.W. 46th Street
Miami, FL 33166
1.305.777.9599 Office
1.305.777.9598 Fax

www.infrico.us
service@infrico.com
sales@infrico.com

APPROVALS: AVAILABLE AT:



Revision: 03 Date: 02/09/2015 VIP1490B1/3SOLIDLID_FT_62_3



Project: _____

Location: _____

Item #: _____ Quantity: _____

Model #: _____

MODEL: ICT-VIP1490B1/3SOLIDLID

COUNTER TOP:
Refrigerated ingredient displays – Solid lid

STANDARD FEATURES

➤ **Exterior**

- AISI 304 Stainless Steel.
- AISI 304 Stainless Steel lid,
- Levelling feet.

➤ **Interior**

- AISI 304 Stainless Steel,
- Sealed interior floors and rounded cabinet corners,
- Stainless steel 6" deep pans, included.

➤ **Insulation**

- CFC-Free polyurethane insulation, entire cabinet structure is foamed-in place using a high density polyurethane insulation,
- Low GWP & Zero ODP effect.

➤ **Refrigeration**

- Digital temperature controller with automatic defrost system,
- Cold wall refrigeration system,
- Refrigeration capacity: 973 Btu/h (14°F) / 190 W (-10°C).

OPTIONAL FEATURES

- ✓ Electrical connection is 220-230 V / 1ph / 50 Hz (plug type varies).

➤ **Electrical**

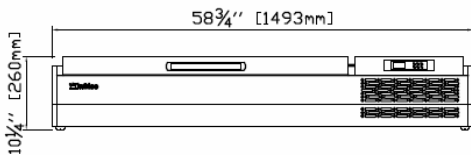
- Cord and NEMA 5-15P plug.
- Electrical connection is 115V / 1ph / 60 Hz.



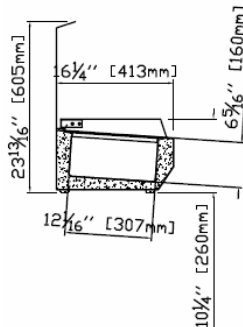
- **ETL Listed to UL471 Standard and Sanitation classified to NSF7.**

PLAN VIEW

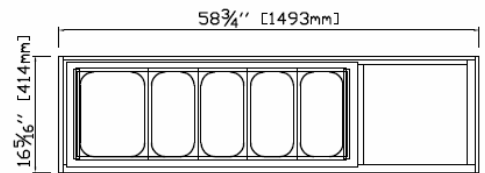
ELEVATION



RIGHT VIEW



PLAN VIEW



ETL LISTED TO UL471 STANDARD AND SANITATION CLASSIFIED TO NSF7 – WE RESERVE THE RIGHT TO CHANGE SPECIFICATIONS WITHOUT PRIOR NOTICE



Infrico USA Corp.
7042 N.W. 46th Street
Miami, FL 33166
1.305.777.9599 Office
1.305.777.9598 Fax

www.infrico.us
service@infrico.com
sales@infrico.com

APPROVALS: AVAILABLE AT:



Revision: 03 Date: 02/09/2015 VIP1490B1/3SOLIDLID_FT_62-3