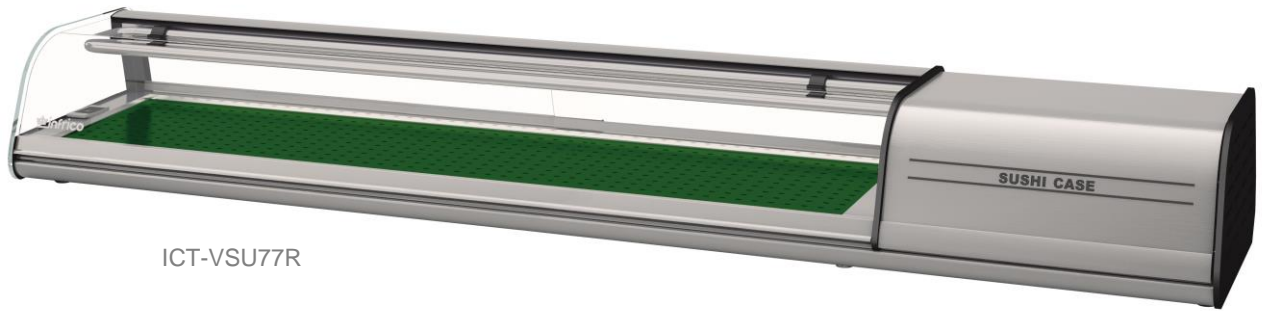


MODEL: ICT-VSU77R *SUSHI CASES – Right side condensing unit*

Important: Only display refrigerated product in Sushi Case. It is recommended that Sushi Case is cleaned daily and disconnected.



ICT-VSU77R

General Strengths

- ✓ **Sanitation.** The interior cabinet is built with rounded corners (extensive radius for easy cleaning). Quick ability to take off shelves and slides for interior cleaning. Each cabinet has a drain at the bottom of the unit. When cleaning the unit make sure the drain hose is routed to a floor drain.
- ✓ **Control systems.** Higher precision in managing temperature settings. The ability to adjust temperature ranges to meet end user's requirements.
- ✓ **100% Tested.** All condenser units are 100% tested in helium chambers in order to detect refrigeration leaks.
- ✓ **Certified.** Audited and Certified by **INTERTEK** for compliance with UL 471 and NSF 7. AENOR audited and certified by internationally recognized firm. ISO 9001:2008 (Quality); ISO 14001:2004 (Environmental); OSHAS 18001:2007 (Prevention and Worker Safety)
- ✓ **Lighting.** Interior cabinet includes LED lighting, for brighter lighting and energy efficiency. LED saves 90% more energy compared to traditional fluorescent bulbs. Considerably increases product visibility.

MODEL	Dimensions (inches) (mm)			Nº Doors	Ref.	Ref. Weight (Lbs.) (gr.)	Temp. Range (°F) (°C)	Capacity (Cu. Ft.) (L)	Cond. Unit. H.P.	Case Amps 115 V.	Crated Weight (Lbs.) (Kg.)
	W	D	H								
ICT-VSU77R	77-5/8 1972	16-1/8 410	9 230	2	R134a	1.10 500	30°F/34°F -1°C/+1°C	1.14 32	1/4	3.6	171 78

ETL LISTED TO UL471 STANDARD AND SANITATION CLASSIFIED TO NSF7 – WE RESERVE THE RIGHT TO CHANGE SPECIFICATIONS WITHOUT PRIOR NOTICE

MODEL: ICT-VSU77R *SUSHI CASES – Right side condensing unit*

STANDARD FEATURES

➤ **Exterior**

- AISI 304 Stainless Steel,
- Tilt-forward security tempered glass system,
- Rear sliding windows, included,
- Anodized aluminium silver profile,
- Levelling feet.

➤ **Interior**

- AISI 304 Stainless Steel,
- Plastic exhibition tray,
- Internal drain plug for easy cleaning,
- **LED Lighting** in top profile.

➤ **Insulation**

- CFC-Free polyurethane insulation, entire cabinet structure is foamed-in place using a high density polyurethane insulation,
- Low GWP & Zero ODP effect.

➤ **Refrigeration**

- Digital temperature controller,
- Manual defrost system.
- Gravity coil on top and cold plate refrigeration system on the bottom,
- Refrigeration capacity: 955 Btu/h (14°F) / 280 W (-10°C).

➤ **Electrical**

- Cord and NEMA 5-15P plug.
- Electrical connection is 115V / 1ph / 60 Hz.



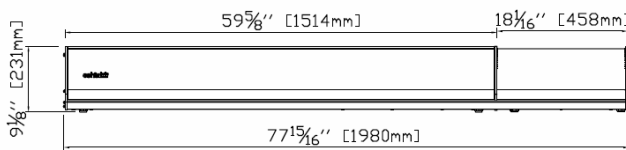
OPTIONAL FEATURES

- ✓ Electrical connection is 220-230 V / 1ph / 50 Hz (plug type varies).

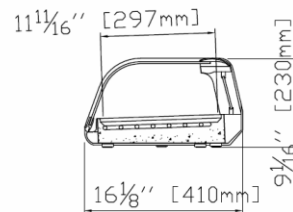
- **ETL Listed to UL471 Standard and Sanitation classified to NSF7.**

PLAN VIEW

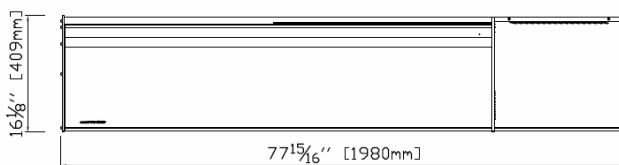
ELEVATION



RIGHT VIEW



PLAN VIEW



ETL LISTED TO UL471 STANDARD AND SANITATION CLASSIFIED TO NSF7 – WE RESERVE THE RIGHT TO CHANGE SPECIFICATIONS WITHOUT PRIOR NOTICE