

**MODEL: IMD-EVV23R1G**
**IMD-EVV49R2G**
**Wine cellars Serie Vintage.**


### General Strengths

- ✓ **Sanitation.** The interior cabinet is built with rounded corners (extensive radius for easy cleaning). Quick ability to take off shelves and slides for interior cleaning. Each cabinet has a drain at the bottom of the unit. When cleaning the unit make sure the drain hose is routed to a floor drain.
- ✓ **Doors.** All doors include triple chamber door gaskets, easy to remove and snap in.
- ✓ **Control systems.** Higher precision in managing temperature settings. Greater ability to adjust temperature ranges as per the end user's requirement.
- ✓ **100% Tested.** All condenser units are tested 100%, in helium chambers to refrigerant leak detections.
- ✓ **Certified.** Audited and Certified by **INTERTEK** for compliance with UL 471 and NSF 7. AENOR audited and certified by internationally recognized firm. ISO 9001:2008 (Quality); ISO 14001:2004 (Environmental); OSHAS 18001:2007 (Prevention and Worker Safety)
- ✓ **Lighting.** Interior cabinet includes LED lighting, for brighter lighting and energy efficiency. LED saves 90% more energy compared to traditional fluorescent bulbs. Increases product visibility considerably.

MODEL	Dimensions (inches) (mm)			N° Doors	N° Shelves	N° Bottles	Ref.	Ref. Weight (Lbs.) (gr.)	Temp. Range (°F) (°C)	Capacity (Cu. Ft.) (L)	Cond. Unit. H.P.	Case Amps 115 V.	Crated Weight (Lbs.) (Kg.)
	W	D	H										
IMD- EVV23R1G	27-1/8 690	23-5/8 601	80 2032	1	7	90	R134a	0.27 270	34°F / 64°F +4°C / +18°C	9.35 265	1/4	4.5	432 196
IMD- EVV49R2G	54-1/2 1385	23-5/8 601	80 2032	2	14	180	R134a	0.86 390	34°F / 64°F +4°C / +18°C	22.60 640	3/8	6.65	550 249

ETL LISTED TO UL471 STANDARD AND SANITATION CLASSIFIED TO NSF7 – WE RESERVE THE RIGHT TO CHANGE SPECIFICATIONS WITHOUT PRIOR NOTICE

**MODEL: IMD-EVV23R1G**
**IMD-EVV49R2G**
**Wine cellars Serie Vintage.**

## STANDARD FEATURES

- Wine cooler Retro models, manufactured for exhibiting, maintaining and preserving wine with a similar design like refrigeration equipment manufactured in the 1960's and built with the current production technologies.
- **Exterior**
  - 100% Pine wood exterior (Top, Front, Sides).
- **Interior**
  - AISI 430 18/10 Stainless Steel,
  - Sealed interior floors and rounded cabinet corners,
  - LED Interior lighting.
- **Doors**
  - Wooden doors with double glass (6-10-4),
  - Easy removal triple chamber gaskets,
  - Full-height door opening: 19-1/4"x53" (489x1346mm).
- **Insulation**
  - Free CFC's high density (40kg/m3) polyurethane with low GWP & Zero ODP Effect.
- **Shelving**
  - (7) wooden shelves, adjustable height and easy removal,
  - Dimensions WxD: 18-3/4"x16-1/2" (477x420 mm).
- **Refrigeration**
  - Digital temperature controller with automatic defrost system,
  - Energy -saving non- electric condensate pan,
  - Evaporator coil coated with anti-corrosion material 100% Polyester,
  - Forced air refrigeration system,
  - Control of the final defrost temperature,
  - Refrigeration capacity: 1017 Btu/h (14°F) / 298 W (-10°C). (EVV23R1G)
  - Refrigeration capacity: 1583 Btu/h (14°F) / 464 W (-10°C). (EVV49R2G)

## OPTIONAL FEATURES

- ✓ Electrical connection is 220-230 V / 1ph / 50 Hz (plug type varies).
- **Electrical**
  - Cord and NEMA 5-15P plug,
  - Electrical connection is 115V / 1ph / 60 Hz.
- **ETL Listed to UL471 Standard and Sanitation classified to NSF7.**



ETL LISTED TO UL471 STANDARD AND SANITATION CLASSIFIED TO NSF7 – WE RESERVE THE RIGHT TO CHANGE SPECIFICATIONS WITHOUT PRIOR NOTICE



Project: \_\_\_\_\_

Location: \_\_\_\_\_

Item #: \_\_\_\_\_ Quantity: \_\_\_\_\_

Model #: \_\_\_\_\_

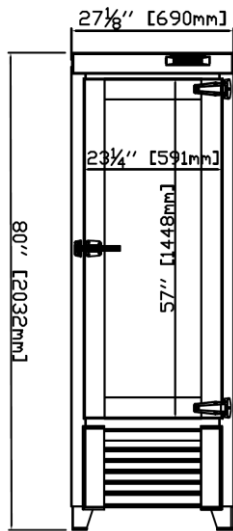
MODEL: **IMD-EVV23R1G**

**IMD-EVV49R2G**

*Wine cellars Serie Vintage.*

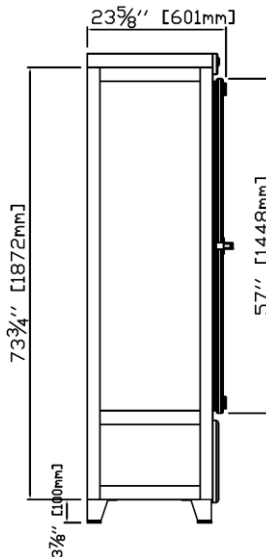
PLAN VIEW

ELEVATION

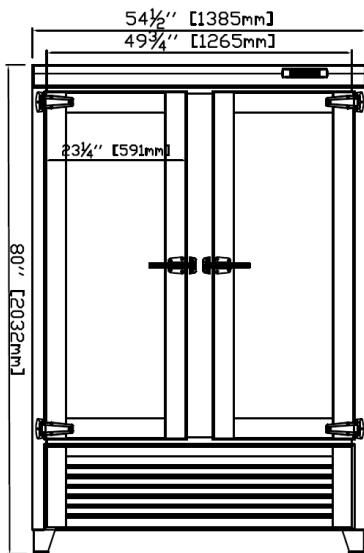
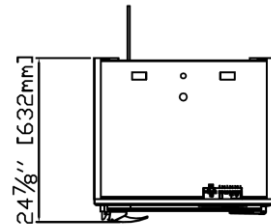


IMC-EVV23R1G

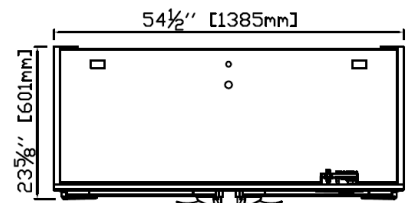
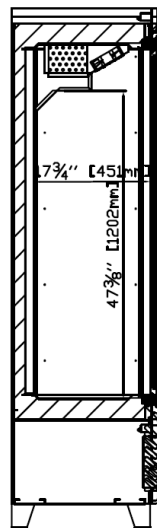
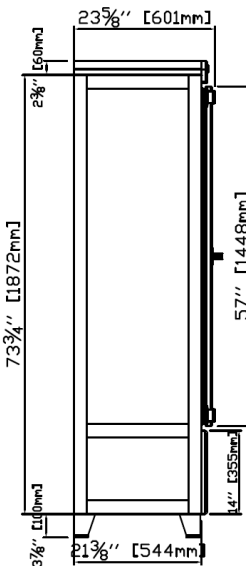
RIGHT VIEW



PLAN VIEW



IMC-EVV49R2G



Revision: 02 Date: 05/25/2016 IMD-EVV23R1G, IMD-EVV49R2G\_FT\_62\_2

ETL LISTED TO UL471 STANDARD AND SANITATION CLASSIFIED TO NSF7 – WE RESERVE THE RIGHT TO CHANGE SPECIFICATIONS WITHOUT PRIOR NOTICE



AUTODESK  
REVIT



**Infrico USA Corp.**  
7042 N.W. 46th Street  
Miami, FL 33166  
1.305.777.9599 Office  
1.305.777.9598 Fax

**www.infrico.us**  
service@infrico.com  
sales@infrico.com

**APPROVALS: AVAILABLE AT:**

Follow us: