

PROJECT NAME: \_\_\_\_\_ LOCATION: \_\_\_\_\_

ITEM: \_\_\_\_\_ MODEL: \_\_\_\_\_

## Salad and Sandwich Units

## FEATURES LIST

**CST-28-X, CST-36-X, CST-48-X  
 CST-60-X, CST-72-X**

- Stainless steel exterior, aluminum interior and back.
- Refrigeration system keeps food at safe temperatures between 33°F and 41°F
- Self-Closing doors with 90 degree stay-open feature.
- Shelves: Adjustable heavy-duty PVC coated shelves.
- Comes standard with NSF approved food pans and cutting board.
- Electronic control system makes it easy to adjust temperature set point and defrost frequency.
- Pre-installed 4" swivel casters with brakes.
- Easy to access condenser coil for cleaning and service.
- Uses R290 refrigerant, which is eco-friendly and more efficient.
- **WARRANTY:** 2 Years Parts and Labor and an additional 3 years on compressor

\* Not suitable for installation in a non-commercial or residential application



Approvals

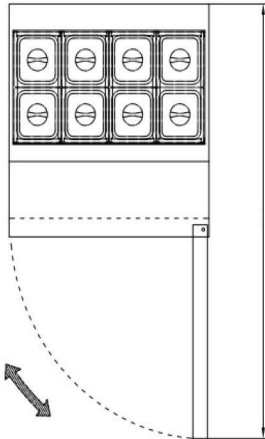
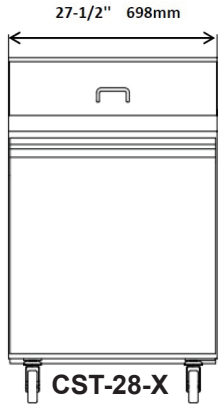


As continued product improvement is a policy, specifications are subject to change without notice

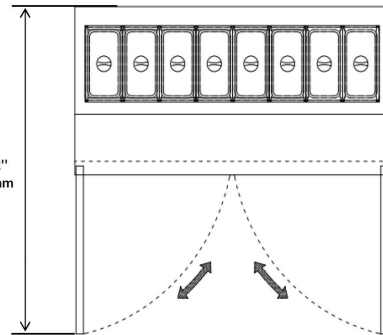
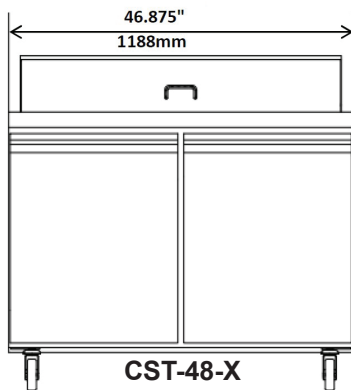
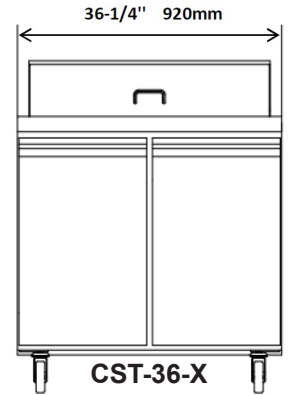
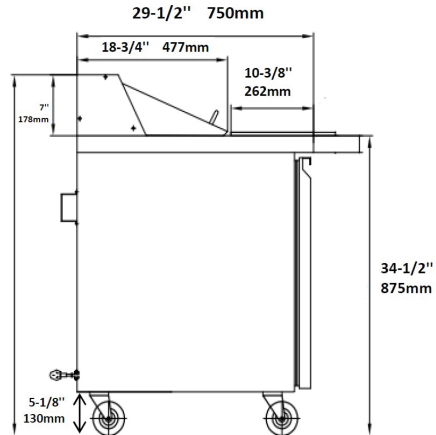
CONFORMS TO NSF/ANSI STD 7

## PLAN VIEW

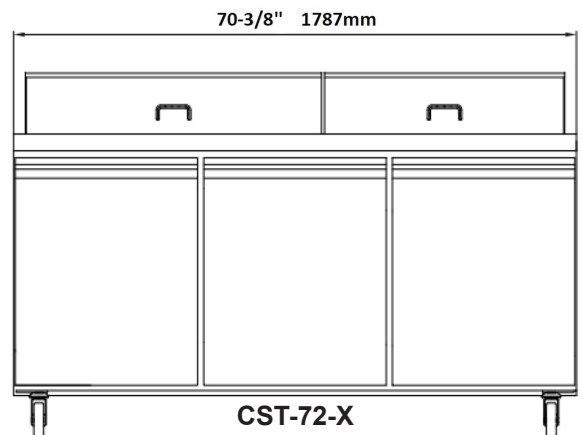
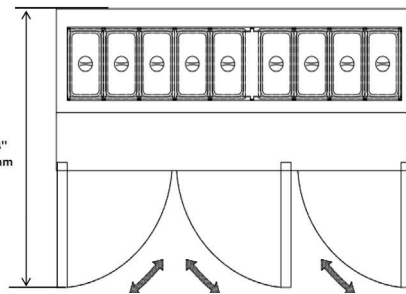
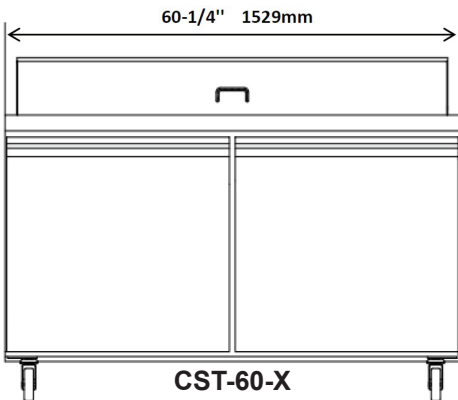
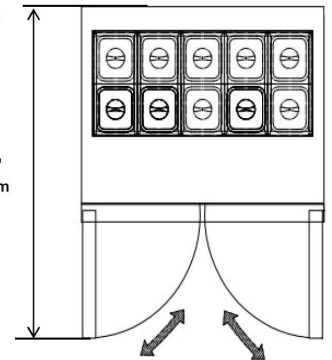
Front view



Side view



Top view



Model	Doors	Shelves	Cabinet Dim (in)			HP	Voltage /Hz /ph	Amp	NEMA Plug	Cord Lgth (ft)	Ship Weight (lbs)
			L	D	H						
CST-28-X	1	1	27.5	29.5	41.5	1/5	115/60/1	4.5	5-15P	10	255
CST-36-X	2	2	36.25	29.5	41.5	1/5	115/60/1	5.5	5-15P	10	341
CST-48-X	2	2	46.875	29.5	41.5	1/4	115/60/1	6.5	5-15P	10	394
CST-60-X	2	2	60.2	29.5	41.5	1/4	115/60/1	7.0	5-15P	10	451
CST-72-X	3	3	70.4	29.5	41.5	3/4	115/60/1	9.4	5-15P	10	513